



Opening Doors Finding Hope  
Capital Campaign



The Fullbright Family

When Olivia Fullbright was pregnant with her daughter Iris, what should have been a routine pregnancy changed her family's lives. Her daughter was delivered via cesarean hysterectomy at 31 weeks and was rushed to the NICU. Olivia found herself recovering from major surgery, while she and her husband Gunner cared for their toddler and wondered how they were going to handle driving hours each day to stay with the baby. "When the Ronald McDonald House came up as an option, we were completely blown away. We have been here since a few days after delivery. Financially it would not have been doable for us to be here close to our daughter."



Ronald McDonald House Charities® Oklahoma City has provided a home away from home to parents and families with children who are ill or injured since 1984. We offer 40 overnight guest rooms, as well as a daytime respite room and essential resources for families whose children are receiving care at Oklahoma Children's Hospital.

With multiple Oklahoma City metropolitan hospitals offering pediatric-related specialties, the need for a second House in northwest Oklahoma City — closer to Mercy Hospital's neonatal intensive care unit (NICU) and Love Family Women's Center, INTEGRIS Children's Hospital and Bethany Children's Health Center — is crucial.



Mission

We provide essential services that remove barriers, strengthen families, and promote healing when children need healthcare.

Vision

A world where every family has what they need to ensure the best health outcomes for their children.

Purpose

Caring for families with children who are ill or injured.







Lone Grove  
31 nights stayed

Logan and Branson Barrick are busy parents to four children under the age of six: Adaline (5), twins Beau and Bella (2) and the newest member of the family, Luke, who was born in November with multiple health challenges.

Luke had HRHS, a rare congenital heart defect that prevents blood from flowing properly to the lungs and the rest of the body; pulmonary artery hypoplasia, a rare condition that causes underdeveloped lungs and can impact not only breathing but also heart function; and tricuspid atresia, a rare, serious congenital heart defect that occurs when the tricuspid valve doesn't form.

The family lives in Lone Grove, about an hour and a half away from Oklahoma Children's Hospital, where Luke had the first of three open-heart surgeries needed to repair his heart. "We've been very thankful that we have the Ronald McDonald House to be able to stay in because we've got three other little ones that we needed to be able to see. The twins were in the NICU when they were born,

and we didn't have anything like this so we had to just travel back and forth every day which made it very difficult. Being able to live all together and be together and never have to leave him has been amazing," said Luke's mom, Logan.

The family's stay at the Ronald McDonald House enabled Logan and Branson to be a part of so much of Luke's hands-on care while marking milestones and making precious memories like his first feeding. They were able to be there for the doctors' rounds every morning and still maintain much of their normal family routine with their other children.

The Barricks are enjoying being back at home for the time being. When it's time for Luke's next surgery, they know the Ronald McDonald House will be waiting for them.

## The Barrick Family

Branson, Beau, Adaline, Bella, Logan, Luke (at right)





## Keeping families together when it matters most.

A child's hospitalization is a heavy burden for any family. The emotional strain is immense and financial worries only make it harder.

The Ronald McDonald House eases this burden for families by providing a comfortable home away from home at no cost, keeping families together so parents can focus on their child's health and family well-being.

Families enjoy all the comforts of home when staying at the Ronald McDonald House, from cozy bedrooms and spacious kitchens to laundry facilities, computer access and a children's playroom. Volunteers help prepare home-cooked dinners and families can prepare their favorite foods in our spacious kitchens. Beyond the significant cost savings — an estimated \$116 per day on hotel

expenses and even more for meals — the true value lies in the sense of community. Surrounded by volunteers, staff and other families, guests find comfort and support in a healing environment.

Our Ronald McDonald House at Oklahoma Children's Hospital can house up to 40 families each night. We also welcome nearly 12,000 visitors each year to the Ronald McDonald Family Room® inside Oklahoma Children's Hospital for daytime respite during stressful hospital stays.

The House's proximity to the hospital is a lifeline for parents. They can be at their child's bedside anytime, day or night, and readily meet with the medical team. Children benefit from having their families nearby, providing comfort and essential support for healing.

*“Being able to be together and never have to leave him (baby Luke) has been amazing.”*

— LOGAN BARRICK  
Luke's mom







The family dining room and kitchen, one of the most frequently used areas in the House, will provide a space for families and friends to gather for meals, snacks and connection.



The House will include a doghouse for the therapy dog, who will greet visitors, offer comfort and provide companionship to families missing their pets.

## Opening a new door of hope.

Leaving a child's side when they are ill or injured is never easy and hospital proximity is the biggest factor influencing a parent's decision to take even a short break for self-care.

For families who are seeking medical care in Oklahoma City for their ill or injured child, finding comfortable, affordable housing near area hospitals is a significant challenge. While the existing Ronald McDonald House serves families at Oklahoma Children's Hospital, those at other metro-area hospitals are left unserved.

The need for supportive housing is projected to grow over the next 5–10 years as more rural hospitals close and specialized pediatric care expands in Oklahoma City, bringing more families from across the state. The growing demand is clear — in 2024, we provided 13,851 nights of stay for families, up from 12,161 in 2023, and we often have a waitlist.

To help bridge this gap, the new Ronald McDonald House planned for northwest Oklahoma City will enable us to serve families seeking

treatment for their child at three additional hospitals, as well as overflow families from our current location.

Located near Mercy Hospital's NICU and Love Family Women's Center, and just minutes from INTEGRIS Children's Hospital and Bethany Children's Health Center, the House will ensure more families can stay close to their child's medical care.

Once completed, the three-story, 29,000-square-foot House will offer accommodations for up to 28 families nightly. This expansion will not only keep families together during critical times but will also provide significant financial relief, saving families approximately \$940,000 annually in temporary living expenses.

The new House will offer more than just a place to stay — it will create a supportive and healing community. Thoughtfully designed gathering spaces, including spacious living, dining and kitchen areas, will foster connection and provide families with a sense of belonging during their child's medical journey.





## The Moore Family

Tim, Krystine, Amelia

Claremore  
189 nights stayed

### At the Ronald McDonald House, the House becomes a home, caring creates community and strangers become lifelong friends.

As the Moores rushed baby Amelia to Oklahoma City for surgery, they remembered overhearing hospital staff talking about 'the other baby' in need of urgent medical care. That other baby was Parker, whose parents, Faith and David, were navigating their own crisis. During her early days at the House, Faith kept to herself, that is until she met Krystine, whom she calls "the friendliest human you could ever meet." Both children were in the cardiac unit but on different floors, and both families, facing frightening situations, quickly forged a fast friendship. "We just kept running into her, and next thing you know, we're texting every day, and we still text every single day."

#### The Moores

After meeting at church, Krystine and Tim Moore quickly fell in love and got married. At ages 35 and 40, they were excited to start a family. After a smooth pregnancy, Krystine gave birth to baby Amelia.

Four days later, something just felt off, and Krystine found herself praying in the shower. "I said God, if there's something going on, just kind of nudge me to take her in if we need to." The sign she was looking for came soon after. "I was trying to feed her a bottle, and she spit it up. And just the way it looked, and the way it happened, I knew it wasn't right, and we needed to go."

At the hospital, the Moores expected to hear that Amelia was a little dehydrated, or maybe even that everything was fine. Instead, Krystine says, "They had a trauma room set up, and they just grabbed Amelia." As the medical team worked on Amelia, the Moores prayed, cried and hoped for the best. Finally there was news. Amelia was born with life-threatening congenital heart disease. Two days later she was rushed to Oklahoma Children's Hospital, hours away, for a series of critical surgeries.

Facing months of hospitalization, the Moores worried. Would they have to move? How could

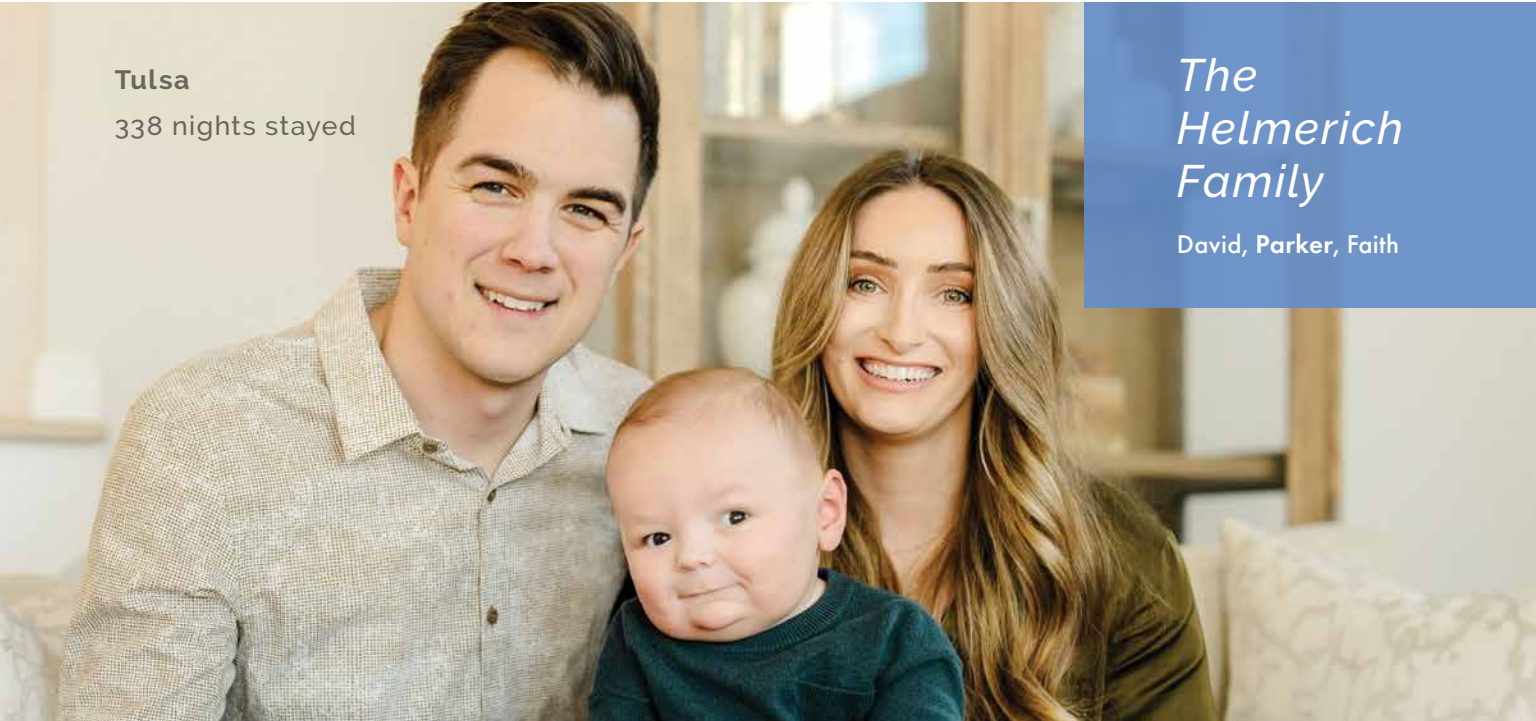
they afford months in a hotel? Fortunately, they immediately secured a spot at the Ronald McDonald House. "Besides our faith, one of the most important things was, for us, having somewhere to go. For our mental health, sleep and having somewhere to lay your head is so important," Tim said.

#### The Helmerichs

Parker Helmerich, a happy, healthy toddler, underwent a heart transplant when he was almost one year old — the first pediatric heart transplant in Oklahoma in more than three decades. When he was born, his parents, Faith and David, had no indication he even had a heart defect, much less that he would need a new heart. Soon, though, Parker was diagnosed with pulmonary stenosis, a narrowing of the pulmonary valve that could be corrected with a catheter procedure. "With the original prognosis, they were thinking he'd be in the hospital for two weeks max," David said. The Helmerichs knew about Ronald McDonald House but didn't want to take up a room since they thought they'd all be home soon.

"In Parker's case, during his procedure, it was just a lot worse than they expected. They weren't able to fix it. He coded during the cath procedure and required 34 minutes of CPR. They were able to bring him back to us praise the Lord," Faith said. It soon became clear that Parker's only option was a heart transplant. The Helmerichs settled into the House and began their seven-month wait. "You don't know how long you're going to have to wait," she said. "I think we would have had to make the decision to move to Oklahoma City and completely uproot our lives. Having the Ronald McDonald House as an option was just a miracle and provided us a home away from home where we could stay and be super close to Parker."

For David, the House was a game changer. "When you look at the whole picture, three quarters of my worries are, where we're going to stay? What are we going to eat now? What? What is the next day going to look like? And [with RMHC] all those worries are just set aside."



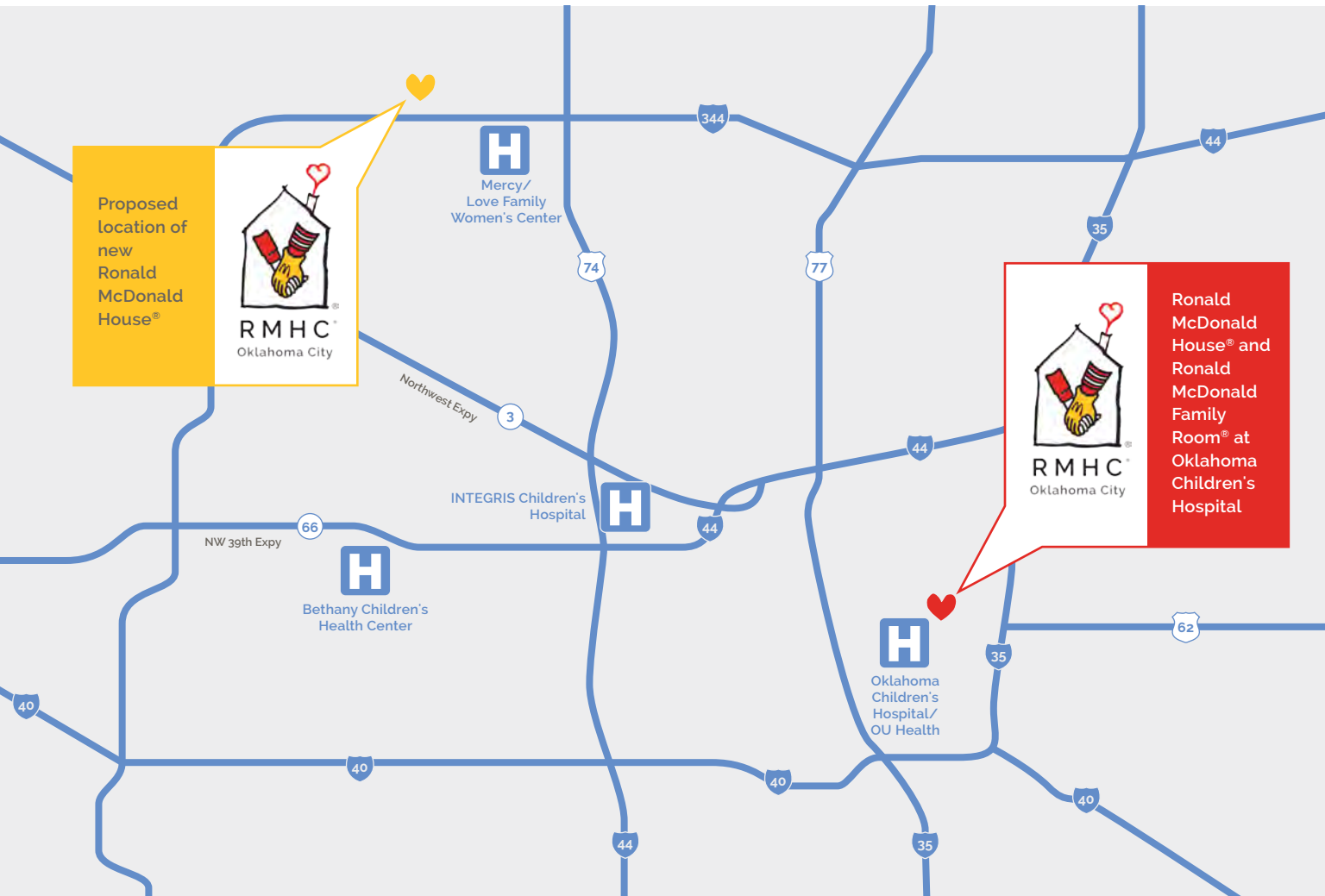
Tulsa  
338 nights stayed

## The Helmerich Family

David, Parker, Faith



The Ronald McDonald House in northwest Oklahoma City will create more space for families to stay together, just minutes from critical medical care.



“Besides our faith, one of the most important things for our mental health was having somewhere to go, to sleep and lay our heads and just decompress.”

— TIM MOORE  
Amelia's dad



The Jim and Vicki English Family Mail Center will be a whimsical and fun spot to pick up the latest news, information on House happenings and letters from home.



An extension of the foyer and reception area, families will be able to gather in the living room to relax from their day in a comfortable setting.

“When a family has an infant in the NICU, even the simplest daily task can become overwhelming. Having the ability to have a safe place near your child is a huge blessing and emotional relief for these families. A place where they can rest, shower, refresh and return to their infant with renewed energy is a priceless gift RMHC gives.”

— TORI O'DANIEL, MD, FACOG  
Medical Director, Love Family Women's Center

10,220

Additional nights of stay our new House will add per year, once completed.

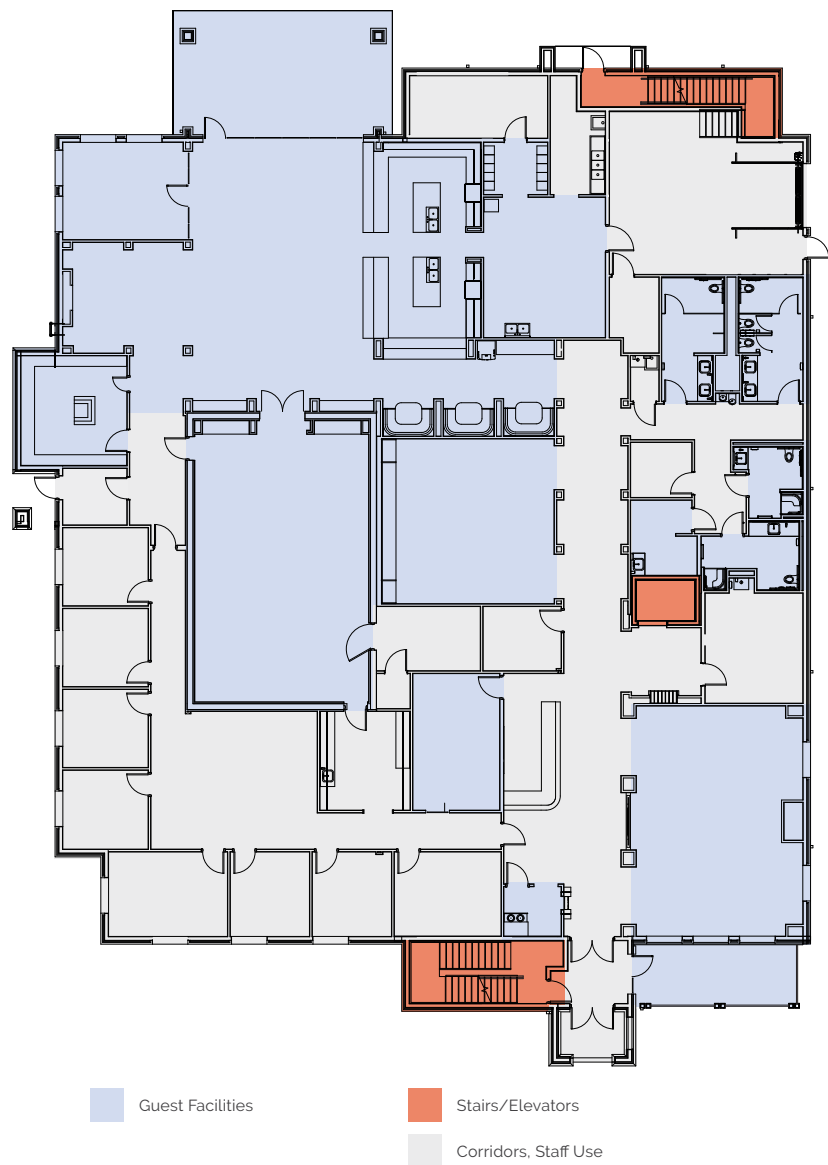
\$940,000

The amount our new House will save families annually, once completed.

98%

Nights for families outside Oklahoma county.

## 1st Floor



## About the House

- Located on the north side of Memorial Road between Meridian Avenue and MacArthur Boulevard.
- Phase I includes building the first two floors, including 14 bedrooms, two of which are extended-stay suites, and shelling out the third floor.
- Phase II will complete the third floor, providing an additional 14 bedrooms including two extended-stay suites.

### First Floor

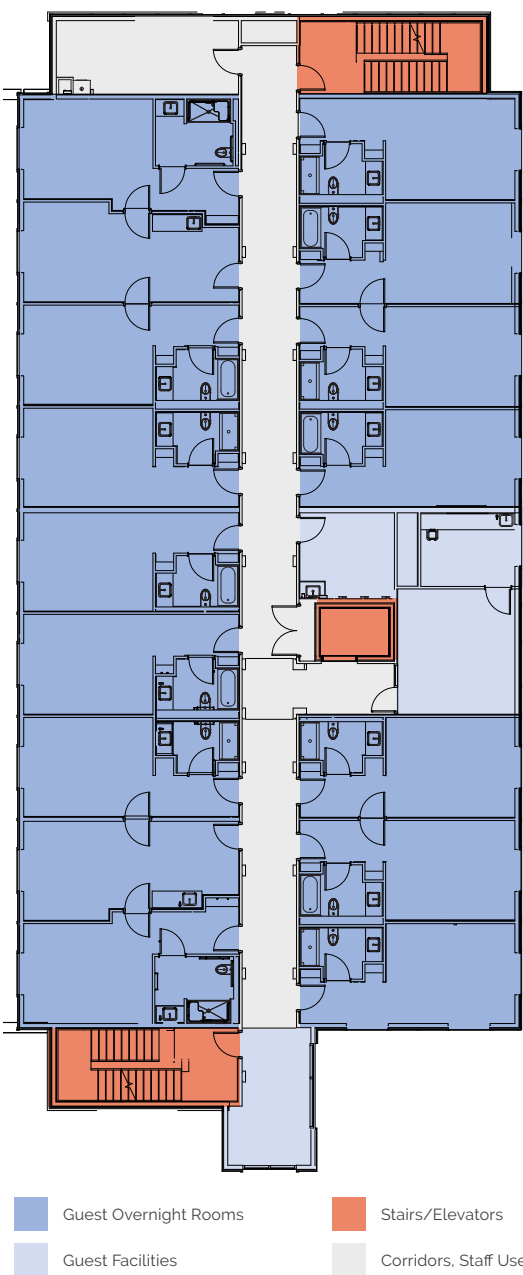
- A spacious main living room and dining area
- Laundry facilities and shower suites for day use by families who are not staying overnight at the House
- An indoor playroom where kids can just be kids
- An outdoor play area with a children's playground and half-court basketball court for family fun
- With amenities for all ages, children can choose toys from the toy closet at check-in or on rainy days, and teens will enjoy the game room for fun and socializing.

## Second and Third Floors

- The second and third floors feature 28 guest bedrooms, including 24 family suites, each with two queen beds and a private bath. Four extended stay suites offer all the comforts of the family suites, plus a sitting area with a sofa bed to accommodate two additional guests and a kitchenette for families with special needs. An elevator ensures accessibility to all rooms.
- Beyond the spacious first floor living room, each residential floor includes a family den with comfortable seating, a flat-screen TV and children's games.
- The second floor offers a wellness salon and the third floor a meditation room.



## 2nd & 3rd Floors



### Limited Naming Opportunities Available

Don't miss your chance to name a space in the new Ronald McDonald House. Create a legacy for your family or business, while also making a difference for families in need. Scan the QR code to view available opportunities. [rmhc-okc.org/openingdoors](http://rmhc-okc.org/openingdoors)



The McDonald's Owner/Operators of Central and Western Oklahoma Beacon of Hope will shine at night, welcoming families to the Ronald McDonald House and guiding them to the hope to be found within. It will feature a play area on the second floor and a reflection nook on the third, offering serene views of Martin Nature Park and the Greens Golf Course.



# Supporting Families, Strengthening Community

Ronald McDonald House programs provide a haven for families facing their child's medical treatment. Restful places to sleep, comforting meals, play areas for siblings and a supportive community offer comfort and hope during challenging times. But the impact extends beyond individual families; it's a community investment with a powerful return.

Recent studies indicate for every \$1 invested by donors, \$3.60 of social and economic value is created by RMHC for families and the community.

- **Children who are sick** experience an improved clinical journey as a result of physical and emotional proximity to family.

- **Parents and family members** feel better connected and less stressed, improving their capacity to focus on supporting their child through treatment.
- **Hospital staff** also experience reduced mental load and are better able to focus on clinical outcomes when families are well-rested and less stressed.
- **Volunteers** have a rewarding experience that gives them a sense of purpose.

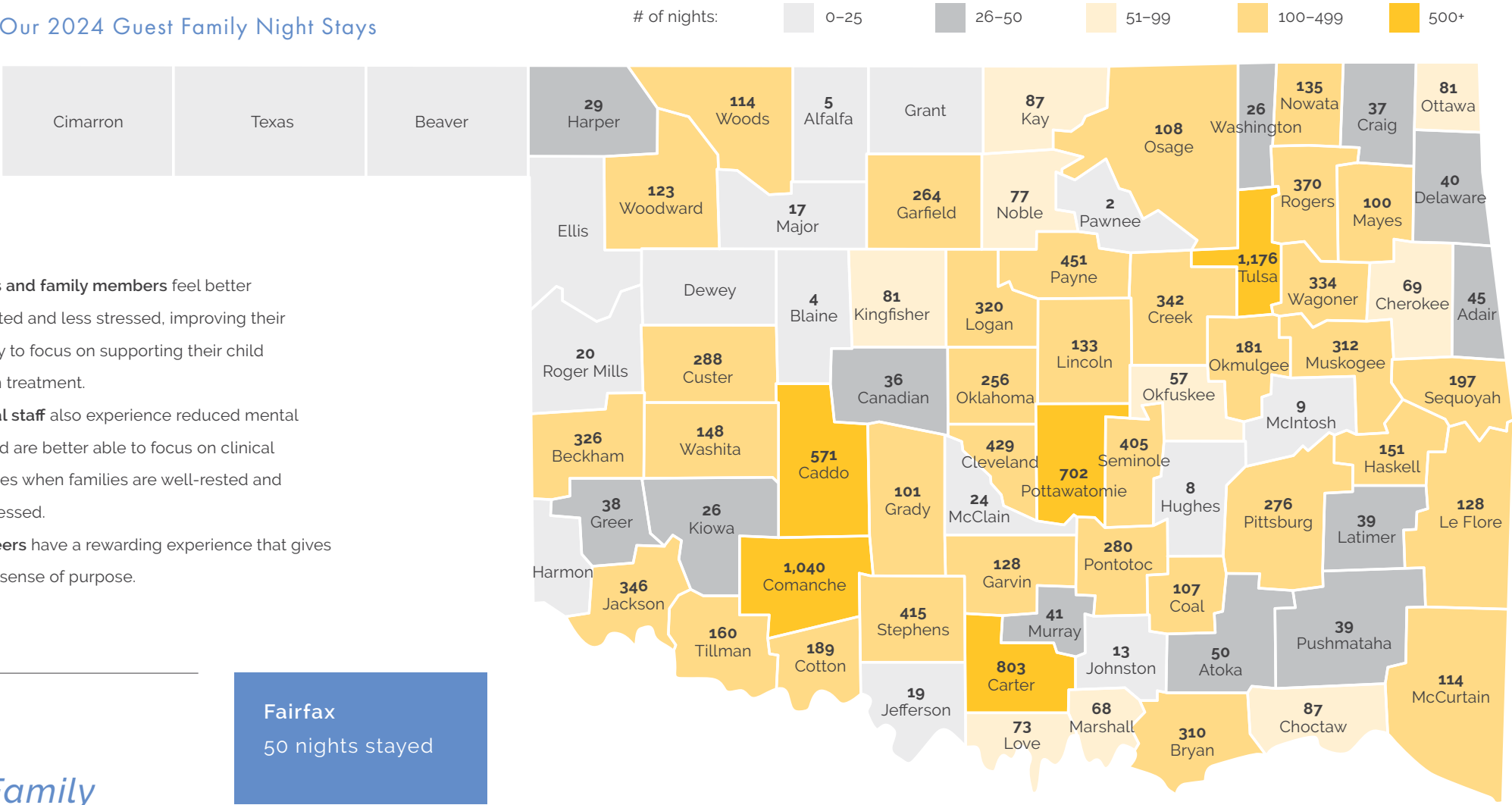


## The Asher Family

Initially, Jessica and Wyatt Asher say that testing had revealed that their sixth child, a daughter named Evelynnn, had Down Syndrome but would be otherwise healthy. When she was born, however, "She was premature and had a heart defect," Jessica says. Surgeries were scheduled, there were unforeseen complications, and what should have been a 10-day stay has turned into months. The care, meals and support from staff and volunteers at the House helps the Ashers stay strong, rested and connected as a family. The busy family lives in Fairfax, some 114 miles away. "If we didn't have Ronald McDonald House, I don't know how we'd get through this, especially financially and driving back and forth."

Fairfax  
50 nights stayed

## Our 2024 Guest Family Night Stays



13,851

The number of nights families stayed at our current House in 2024.

381 nights

Longest stay of a single family during 2024.

21 nights

Average length of stay.

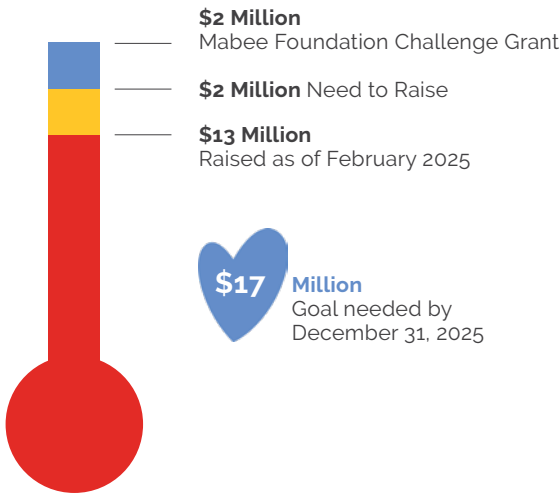


# Bring Us Home

Help keep more families together when their child needs medical treatment with a gift to the Opening Doors Finding Hope Capital Campaign. We've raised \$13 million toward our \$17 million goal for Phase I of the project thanks to generous corporations, foundations, and individual donors, but community support is vital to complete the campaign and build a second Ronald McDonald House in Oklahoma City.

## Double Your Donation

Through a challenge grant, the Mabee Foundation is offering a dollar-for-dollar match if we raise \$2 million by the end of 2025, doubling the impact of every donation.



“Our community has the opportunity to make a real difference in the lives of families facing a child’s serious illness. The capital campaign for a second Ronald McDonald House in Oklahoma City will create more space for families to stay together, just minutes from critical medical care. Join us in supporting this vital project and help keep families close during times of need.”

— DICK TANENBAUM  
Capital Campaign Donor

Through this public phase of the campaign, we are seeking donations from everyday Oklahomans, from small contributions to major gifts.

## How to Give

We offer a variety of ways to make a meaningful difference in the lives of families who need our support. Please consider a gift to our capital campaign. RMHC is a 501(c)3 tax-exempt organization and your donation is tax-deductible within the guidelines of U.S. law.

### Give Online

Make an online gift through our secure, online donation form at [rmhc-okc.org/openingdoors](http://rmhc-okc.org/openingdoors). Gifts may be made one-time or recurring gifts may be set up on a weekly, monthly or quarterly frequency.

### Give by Mail

Contributions by check, money order or cashier's check can be mailed to:  
**Ronald McDonald House Charities Oklahoma City**  
P.O. Box 7979  
Edmond, Oklahoma 73083  
Please make checks payable to Ronald McDonald House Charities Oklahoma City or RMHC-OKC

### Make a Pledge

- Gifts may be pledged over four years, 2025-2028

### Match Your Gift

Matching gifts through your employer can often double or even triple your gift. Ask your human resources department about matching opportunities.

### Naming Opportunities

Honor a loved one or create a legacy for your family or business with a gift of \$10,000 or more. Contact us to explore naming opportunities.

### Make a Gift of Non-cash Assets

Please contact us to make a gift of securities or a required minimum distribution (RMD) from a retirement account.

## Contact Us

To learn more about giving to our capital campaign, please contact:  
**Susan Adams, President and Chief Executive Officer**  
405.424.6873 x 104  
[sadams@rmhc-okc.org](mailto:sadams@rmhc-okc.org).



## Opening Doors Finding Hope

### CAPITAL CAMPAIGN CABINET

John Patrick Lopez, CABINET CHAIR

Cher Bumps

Tracy Caine

Craig Clemons

Karen Cunningham

Porter Cunningham

Dave Deardeuff

Kevin Dunnington

Amy Cook Fisher

Rich Hawk

Tori O'Daniel, MD

Donald K. Rahhal, MD

## Ronald McDonald House Charities Oklahoma City

### 2025 BOARD OF DIRECTORS

Gary Mornhinweg, BOARD CHAIR,

*McDonald's Owner/Operator*

Teri Ashworth, *Forvis Mazars, LLP*

Brandon Bailey, *ADP*

Kendra Barnes, FINANCE COMMITTEE CHAIR,

*Arvest Wealth Management*

Eddie Carter, *Dillard's*

Andrew Gasper, *Palladium Roofing*

Jay Griffin, *Hartzog, Conger, Cason*

Max Harned, Community Volunteer

Cori Loomis, GOVERNANCE COMMITTEE CHAIR,

*McAfee & Taft*

Kara McDonald, *Designtex*

Kyle McElvaney, TREASURER, *IBC Bank*

Betty Merritt, *St. Mary's Regional Medical Center*

Kevin Miller, *Miller Home Team*

Steven Propester, SECRETARY, *Grant Thornton, LLP*

Lauren Richert, Community Volunteer





Chad Smith, MD, *Mercy*

Christine Thompson, *Santiago's McDonald's*

Shane Zimmerman, *Bank of Oklahoma*



[www.rmhc-okc.org](http://www.rmhc-okc.org)  
P.O. Box 7979  
Edmond, OK 73083  
405.424.6873

 [facebook.com/RMHCOKC](https://facebook.com/RMHCOKC)  
 [instagram.com/rmhccokc](https://instagram.com/rmhccokc)  
 [linkedin.com/company/rmhc-okc](https://linkedin.com/company/rmhc-okc)  
 [Youtube.com/RMHCoklahomaCity](https://Youtube.com/RMHCoklahomaCity)

