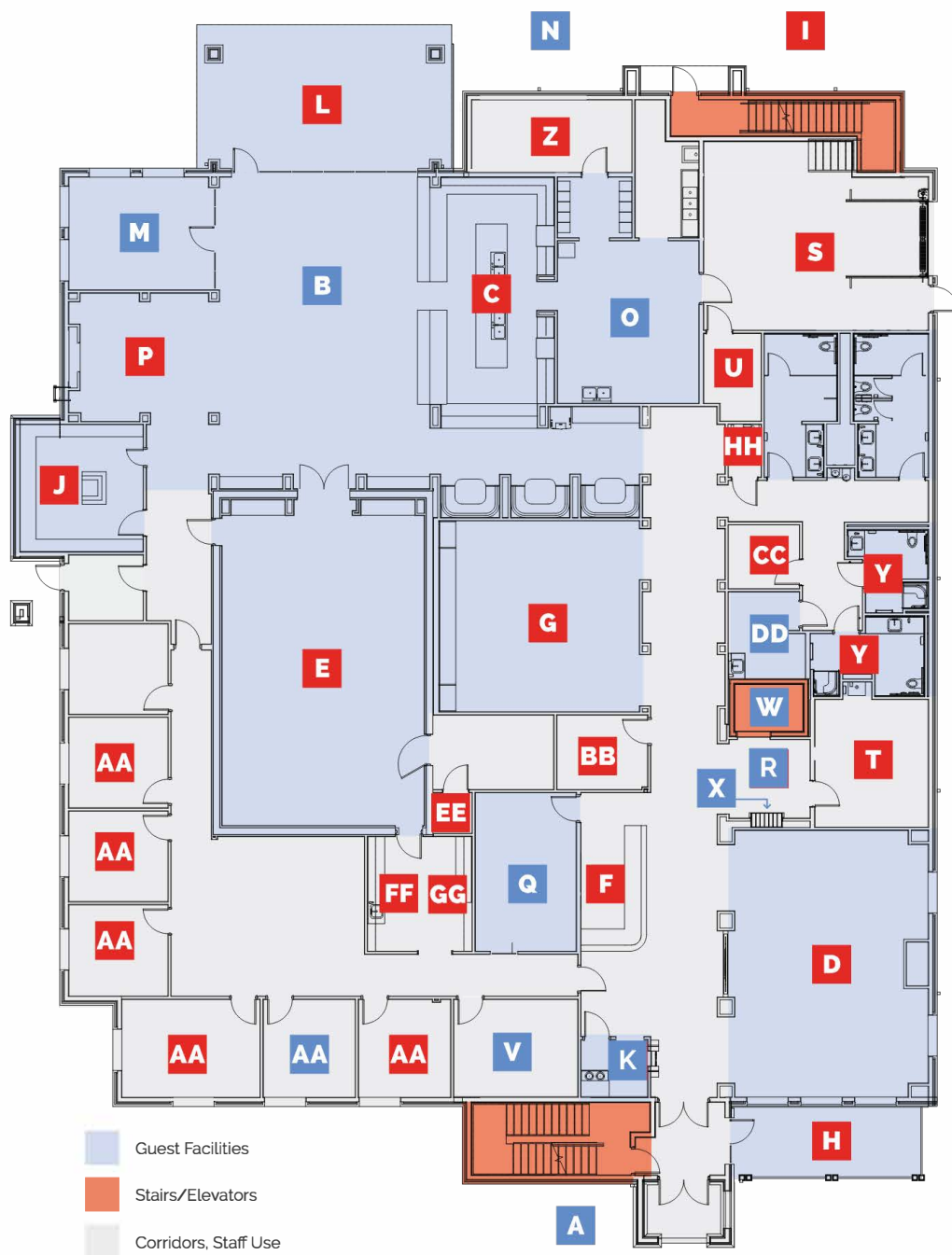




Naming Opportunities

Be the key to **Opening Doors** and **Finding Hope**
at the new Ronald McDonald House in
northwest Oklahoma City.





C Family Kitchen

\$750,000+

In the Family Kitchen, volunteers help prepare meals — one less thing for families to worry about when facing long days at the hospital. Families may also use the kitchen to prepare their favorite comfort foods.

D Main Living Room

\$750,000+

An extension of the foyer and reception area, families gather here to relax from their day in a comfortable setting.

E Activity Room/Safe Room

\$750,000+

A space to host community groups and family activities including wellness classes, holiday celebrations, movie nights and other family-friendly events. This room will also serve as a storm shelter when necessary.

F Foyer & Reception Area

\$500,000+

A warm and friendly welcome awaits guest families upon arrival. This inviting space evokes a sense of comfort and restfulness.

G Game Room

\$500,000+

Books, board games, movies and video games offer parents and siblings an entertaining break from their day at the hospital.

H Entrance Plaza

\$500,000+

The Entrance Plaza welcomes families to the Ronald McDonald House with beautiful landscaping, a covered porch with comfortable seating and VIP parking spaces providing convenient access to the House for families upon arrival.

I Outdoor Play Spaces

\$500,000+

A place for fresh air, exercise and fun for children being treated on an outpatient basis and siblings featuring a walking path and play area.

J Toy Shop

\$375,000+

Children and parents will enjoy selecting toys from our Toy Shop at check-in, in celebration of a birthday or to brighten a rainy day.

A Ronald McDonald House Partner/ The Phillips Family

The House will contain kitchens with well-stocked pantries, dining areas, and other living areas, workspace for staff and volunteers, as well as day use laundry and shower facilities and 28 rooms for overnight stay.

B The Lopez Family & Lopez Foods Dining Room

One of the most utilized areas in the House, the Family Dining Room allows families and friends to gather for meals, snacks, and camaraderie.

1st Floor

Naming Opportunities

Available naming opportunities appear in red.

Reserved rooms are denoted in blue.



K *Ryan Thorley & Family Doghouse*

A perfect home for a therapy dog who welcomes visitors and comforts families who are missing their pets at home.

L *Outdoor Living Area \$250,000+*

The rear patio provides a shaded outdoor space during the hot days of summer or in inclement weather for relaxing or playtime.

M *The Ed and Jodi Sanchez Indoor Playroom*

The Indoor Playroom provides an area for kids to just be kids. Located next to the Family Dining Room, parents can remain close by while their children are having fun.

N *The Love Family Basketball Court*

The half-court Basketball Court invites families to relax and have fun shooting hoops or play a quick pick-up game with other guest families.

O *The Richard and Glenna Tanenbaum Family Pantry*

A well-stocked pantry will be available for families to fix comfort foods and snacks. Lockers are available for each family to keep their own personal food selections while staying at the House.

P *Family Den \$200,000+*

Adjacent to the Family Dining Room, the Family Den provides another space for families to connect with and support one another.

Q *The Dorada Foods Family Welcome Center*

The Family Welcome Center will offer privacy for guest family registration and will be the first point of contact to provide information for a comfortable stay and to let families know they are not alone in their journey.

R *The Hook & Loomis Families Elevator Lobby*

The Elevator Lobby will feature a flat screen television to communicate daily House activities and events.

S *Receiving and Storage Area \$100,000+*

An important hub of the House, this space is the dedicated area for donations, event items and household storage.

T *House Laundry Room \$100,000+*

A place to launder linens and towels to ensure that every room is ready for new arrivals.

U *IT/Data Room \$100,000+*

Linking family and friends is essential to our guest families as is connectivity for staff and volunteers to accomplish their work.

V *The D.W. Garrett Small Conference Room*

The Small Conference Room provides an intimate space for families to meet with staff and social workers. The Room will also be used for meetings with staff, donors, and volunteers.

W *The Bama Companies Elevator Wrap*

The interior of the elevator will be wrapped, transforming a family's trip to their room into a colorful expression of care. The wrap is pre-approved and displayed for three years.

X *The Jim and Vicki English Family Mail Center*

The Family Mail Center will be a whimsical and fun spot to pick up the latest news, information on House happenings and letters from home.

Y *Day Use Shower Rooms (2 available) \$50,000+*

Personal care spaces for families not registered for overnight stays and for staff during emergencies.

Z *House Pantry \$50,000+*

This area will be used to store ingredients and supplies for daily meals provided to guest families.

AA *Administrative Offices (5 of 6 remaining)*

Michael and Cori Loomis \$24,000+

The business center of our House will accommodate fundraising, marketing, administrative, and operations staff.

BB *Guest Services Manager's Office \$24,000+*

Adjacent to Reception and the Family Welcome Center, the Guest Services Manager's office facilitates accessibility for House guests, visitors, and volunteers.

CC *Overnight Room \$24,000+*

A room to be used by staff during inclement weather to maintain 24-hour coverage.

DD *Gary and Jennifer Mornhinweg Day Use Laundry*

Laundry facilities for families who are not registered for overnight stays.

EE *Audio Visual Closet \$20,000+*

Facilitates technology and connectivity in the Activity Room for guest family activities and meetings.

FF *Kitchenette \$20,000+*

An area for staff to store lunches and prepare refreshments for meetings in the Activity Room.

GG *Volunteer Center \$20,000+*

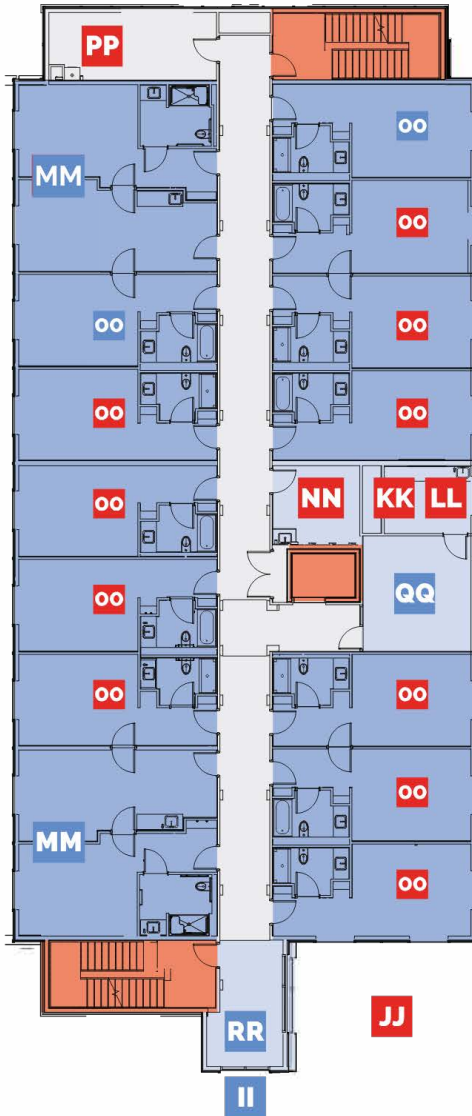
A volunteer work area and a place to plan and organize activities.

HH *Housekeeping Closet \$15,000+*

This will serve as a base of operations for the daily services to keep the House clean and welcoming.

2nd & 3rd Floors

Naming Opportunities



- Guest Overnight Rooms
- Guest Facilities
- Stairs/Elevators
- Corridors, Staff Use

II The McDonald's Owner/Operators of Central and Western Oklahoma Beacon of Hope

The Beacon of Hope will stand for hope for hospitalized children and their families. At night, the light shining from the tower will serve as a beacon, guiding families to the Ronald McDonald House and the comfort to be found within.

JJ Guest Family Floors (2 available) \$1,500,000+

The upper-level floors will each have 12 guest rooms and 2 suites with private bathrooms providing overnight accommodation for guest families, a lounge area and laundry facilities. The second floor will feature a wellness salon, and the third floor will feature a meditation room.

KK Meditation Room (3rd Floor) \$500,000+

A serene space for calm, mindfulness, or spirituality.

LL Wellness Salon (2nd Floor) \$200,000+

Volunteer stylists will provide haircuts and services to pamper our guest families, bolstering their sense of wellbeing.

MM Extended Stay Suites

- The Thorley Family
- Frances and Charles Roos
- Tenaris
- H.J. and Gail Reed

\$48,000+

Offering all the comforts of the Family Suites, the Extended Stay Suites include a sitting area with sofa bed to accommodate

Available naming opportunities appear in red.

Reserved rooms are denoted in blue.

two additional guests and a kitchenette for families with special needs.

NN Guest Laundry Rooms (2 available) \$36,000+

The House offers spacious complimentary laundry facilities for families to use during their stay. The Guest Laundry rooms will be equipped with washers and dryers, detergent, and a folding table to make it convenient for guest families to have clean clothes to wear.

OO Family Suites (20 of 24 remaining) \$24,000+

- Julie Vaughn, in honor of Steven J. Pick
- In memory of Debra Jones
- The Golliver Family
- Kevin & Donna Moore

Each Family Suite includes a private bathroom and bedroom with two queen-sized beds.

PP Linen Storage (2 available) \$15,000+

A place to store clean linens and towels for guest family suites.

QQ Vox Printing and Bank of Oklahoma Family Lounges

Each of the residential floors will offer a den with comfortable seating, a flat screen TV, and games for children.

RR The LaPat Family and Caine Family Reflection Nooks

The Beacon of Hope tower will feature a play area on the second floor and a reflection nook on the third, offering serene views of the Martin Nature Park and the Greens Golf Course.

March 2025 Updated monthly; for the most up-to-date opportunities, visit rmhc-okc.org/openingdoors.

Limited Naming Opportunities Available

Don't miss your chance to name a space in the new Ronald McDonald House. Create a legacy for your family or business, while also making a difference for families in need. Set up a meeting today with Susan Adams, President and Chief Executive Officer, by calling 405.424.6873 x 104 or emailing sadams@rmhc-okc.org. Scan the QR code to see more campaign details at rmhc-okc.org/openingdoors.



Site specific naming rights will be honored for a 10-year period. If an area or room is repurposed before the 10-year period, the donor will be contacted to discuss appropriate recognition for the time remaining.

Gifts between \$23,999 and \$10,000 will be recognized in a special location and all gifts of \$1,000 or more will be recognized on the Main Donor Wall.



Naming Opportunities

Be the key to **Opening Doors** and **Finding Hope**
at the new Ronald McDonald House in
northwest Oklahoma City.

